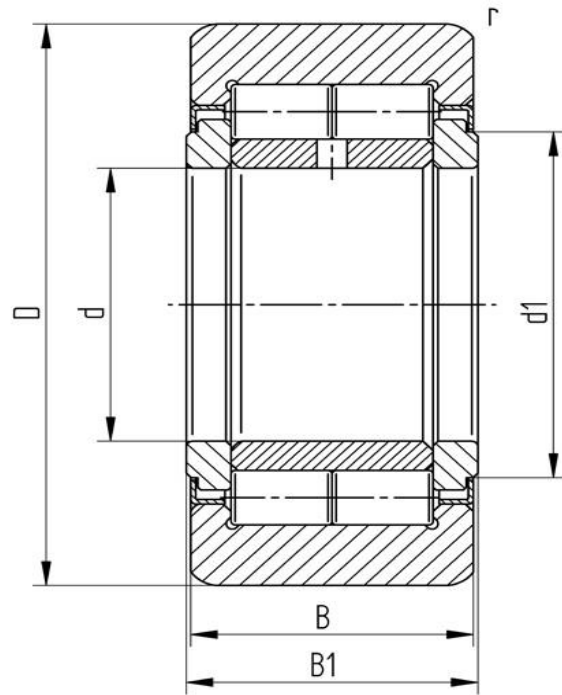


Data sheet

Support roller NUTR 50 110 (crowned, with axial guidance, labyrinth seal)

Designation	NUTR 50 110
Type	crowned
D [mm]	110
d [mm]	50
d1 [mm max.]	60
B1 [mm]	32
B [mm]	30
r [mm]	1,1
r1 [mm]	0,6
Dynamic load Crw[N]	76000
Static load	12100
Speed limit [min-1]	1300



Every specification has been edited and verified carefully. STI Bearings GmbH assumes no liability for potential errors or incompleteness. Technical modifications are subject of changes.
 © 2020 by STI Bearings GmbH
 Reproduction, even excerpts, only with our approval.